

3.2M Grand Format Inkjet Printer

**Mimaki**<sup>TM</sup>

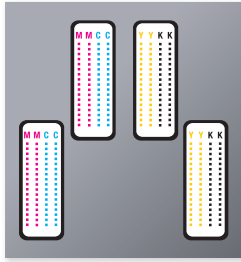
# ***SWJ-320EA***

**For both indoor/outdoor signage**

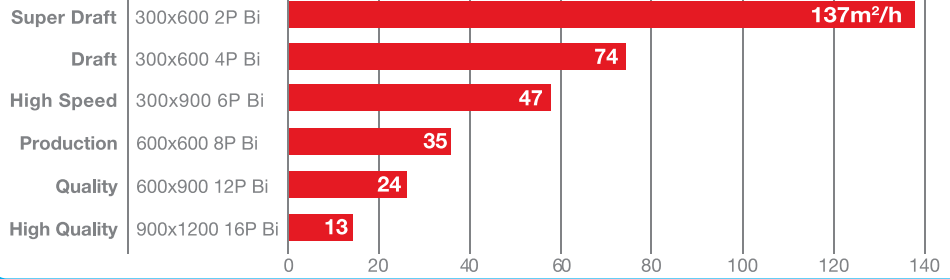
**THE BEST PRINTER TO WIN A COMPETITIVE MARKET**



### Head Configuration



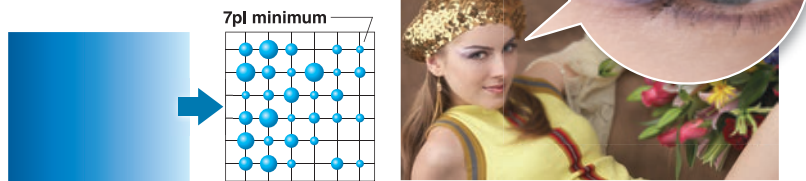
### Print Speed



### Proven High Resolution and Print Quality

#### Variable dot print with a minimum dot size of 7pl

Mimaki's world proven technology produces unbeatable high definition and resolution prints. With three different dot sizes (7pl minimum) and a maximum resolution of 900 x 1,200dpi, the SWJ-320EA ensures fantastic print results without that grainy appearance.



### Eco-Solvent Ink "CS100"

#### Affordable yet reliable solvent ink "CS100"

Not only is the CS100 ink (available in 2L bottles) more affordable than conventional ink cartridges, it also has exceptional stability and low propensity to clog nozzles.

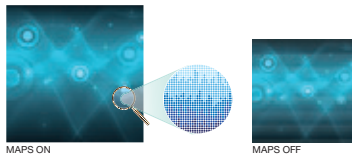
The CS100 ink also brings the same high Mimaki standards for colour accuracy, image durability and weatherability found in other conventional Mimaki solvent inks.



### Mimaki's Core Technologies

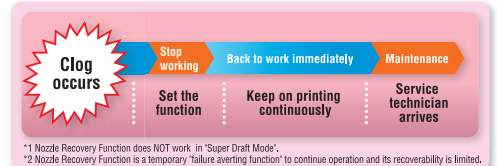
#### Mimaki Advanced Pass System (MAPS4)

Mimaki's unique anti-banding feature, MAPS, is designed to prevent banding. Swath boundaries are overprinted and boundaries prone to banding are printed with fewer ink droplets.



#### Nozzle Recovery System (NRS)

In the unlikely event of a nozzle dropping out during a long print run, the Nozzle Recovery System (NRS) enables the printer to keep on printing in excellent quality until maintenance is performed.



### Specifications

Item	SWJ-320EA
Head	On-demand Piezo head (4 printheads with 2 staggered configuration)
Maximum width	Up to 3,200mm (126")
Print resolution	300 / 600 / 900 / 1,200dpi
Ink	Kind: CS100 solvent ink (C, M, Y, K) Ink supply system: 3L / each colour
Media	Width: Up to 3,250mm (128") Weight: Feeding: up to 100kg (220lbs) / Take-up: up to 40kg (88.2lbs)
Drying device	3-way intelligent heater (Pre/Print/After), Drying fan unit
Media feeding / Take-up device	Equipped
Interface	USB 2.0, Ethernet
Power specification	AC200 - 240 ± 10% , 50/60Hz ± 1Hz , 15A or less
Operational environment	Temperature: 20°C - 30°C (64-86°F) Humidity: 35-65% RH (non condensing)
Dimensions (WxDxH)	5,410 x 995 x 1,440mm (213" x 39.2" x 56.7")
Weight	Less than 850kg (1,873.9lbs)
Option for twin-roll printing	OPT-J0394 - Small Take-up unit

### Applicable Ink

Item	Item no.	Remarks
Solvent ink CS100	Cyan	CS100-C-BB
	Magenta	CS100-M-BB
	Yellow	CS100-Y-BB
	Black	CS100-K-BB

2L ink bottle

Software RIP combining usability and high performance

## RASTER LINK 6 PLUS

\*Bundled Item



# SWJ-320EA

Max Print Width  
**3,200mm**

• Some of the samples in this catalogue are artificial renderings. • Specifications, design and dimensions stated in this catalogue may be subject to change without notice (for technical improvements, etc.). • The corporate names and merchandise names written in this catalogue are the trademark or registered trademark of the respective corporations. • Inkjet printers print using extremely fine dots, so colours may vary slightly after replacement of the printing heads. Also note that if using multiple printer units, colours could vary slightly from one unit to another due to slight individual differences.



**Mimaki Europe B.V.**  
 Stammerdijk 7E, 1112 AA Diemen, the Netherlands  
 Tel. : +31 20 4627640  
 Mail : info@mimakieurope.com  
 Web : www.mimakieurope.com  
 Twitter : @MimakiEurope  
 Instagram : @mimaki\_europe