

A cloud service that enhances business efficiency and peace of mind

Mimaki Cloud Technology



PICT allows users to monitor printer operation and ink usage remotely. It supports better planning by providing real-time data on operational status and performance. PICT helps with scheduled maintenance and preparing for ink refills, ensuring smooth and efficient production.



Software to support operations from design creation to output (included as standard)

Supporting the beauty of prints and operability

Genuine RIP Software



Drawing out more cutting possibilities

Plug-in cutting software for Illustrator/CorelDRAW







Quick, Easy Design Creation

Intuitive Design software



Specifications

		CJV200-160	CJV200-130	CJV200-75	JV200-160
					
Item		On-demand piezo head			
Print resolution		Y:600, 900, 1200dpi X:600, 1200dpi			
Head gap		2levels by manual (1.5mm / 2.0mm)			
Ink	Type	SS21, SS22, BS4			
	Colour	4 colour (C,M,Y,K) 8 colour (C,M,Y,K,Lc,Lm,Lk,Or)			
	Capacity	SS22: 440ml cartridge, 1L ink pack SS21: 440ml cartridge, 2L ink pack BS4: 600ml ink pack, 2L ink pack			
Ink circulation		Yes			
Max. media width		1,620mm	1,371mm	810mm	1,620mm
Max. print width		1,610mm	1,361mm	800mm	1,610mm
Media roll outer diameter		φ 180mm or less			
Media roll weight		25kg or less*1			
Media roll inside diameter		2 / 3 inch			
Cut function	Cut speed / acceleration	Speed: Max.300 mm/s Acceleration: Max. 0.5G			
	Cut pressure	10-450gf			
	Cutter response times	10 times / sec			
	Repeatability	±0.2 mm			
Interface		Ethernet 1000 BASE-T (Recommended) / USB 2.0 Hi-speed			
Power		AC(100~120V/200~240V±10%)x2 50/60Hz±1Hz			
Power consumption		Max.1320W x2 / 4.5W or less (Sleep mode)			
Operational environment	Temperature	20 - 30°C			
	Humidity	35 - 65% Rh (Non condensing)			
	Guaranteed accuracy temperature	20 - 25°C			
	Dust level	Equivalent to general office			
Dimensions (WxDxH)		2,770mm × 748mm × 1,370mm	2,520mm × 748mm × 1,370mm	1,960mm × 748mm × 1,370mm	2,770mm × 748mm × 1,370mm
Weight		140kg	130kg	105kg	140kg

■ Ink

Item	Colour	Item No.	Remarks
BS4 600ml Ink Pack GREENGUARD Gold certified ink	Cyan	BS4-C-60	•OPT-J0361 ECO CASE 4 is required for setup. •2L ink pack is also available. OPT-J0364 MBIS3 and OPT-J0576 MBIS BKT OPT are required.
	Magenta	BS4-M-60	
	Yellow	BS4-Y-60	
	Black	BS4-K-60	
SS22 440ml Cartridge GREENGUARD Gold certified ink	Cyan	SS22-C-44	•1L ink pack is also available. OPT-J0364 MBIS3 and OPT-J0576 MBIS BKT OPT are required.
	Magenta	SS22-M-44	
	Yellow	SS22-Y-44	
	Black	SS22-K-44	
	Light Cyan	SS22-LC-44	
	Light Magenta	SS22-LM-44	
	Orange	SS22-OR-44	
SS21 440ml Cartridge GREENGUARD Gold certified ink	Light Black	SS22-LK-44	•2L ink pack is also available. OPT-J0364 MBIS3 and OPT-J0576 MBIS BKT OPT are required.
	Cyan	SPC-0501C	
	Magenta	SPC-0501M	
	Yellow	SPC-0501Y	
	Black	SPC-0501K	
	Light Cyan	SPC-0501LC	
	Light Magenta	SPC-0501LM	
	Orange	SPC-0501Or	
	Light Black	SPC-0501Lk	

■ Options

Item No.	Item	Image
OPT-J0422	NCU OPT	
OPT-J0364	MBIS3 bulk supply unit	
OPT-J0576	MBIS BKT OPT	
OPT-J0502 *1	Level foot OPT	
OPT-J0578	160 cover OPT	
OPT-J0579	130 cover OPT	
OPT-J0580	75 cover OPT	
OPT-J0361	ECO CASE 4	

*1: With the OPT-J0502 Level Foot attached, supports media up to 45kg.

•Some examples shown in this catalog are artificial renderings. •Specifications, designs and dimensions shown in this catalog may be subject to change without notice for technical improvements. •The corporate and merchandise names in this catalog are the trademarks or registered trademarks of the respective corporations. •Inkjet printers use extremely fine dots, so colors may vary slightly after replacement of print heads. •Also note that when using multiple printer units, colors could vary slightly from one unit to another due to slight individual differences. •Please note that descriptions and data in this catalog are as of April 2025.



MIMAKI EUROPE BV

Stammerdijk 7E, 1112 AA Diemen, The Netherlands
www.mimakieurope.com | Tel. : +31 20 4627640

@MimakiEurope

For Sign Graphics



Eco-Solvent Inkjet Printers

200 series

CJV200-160 / -130 / -75

JV200-160

High Image Quality and Ease of Use for Everyone



Printer JV200



Printer & Cutter CJV200





Exceptional Beauty

Powered by the advanced '330 Engine' technology, the 200 Series features a single printhead that ensures precise control of ink droplets as small as 3pl. The 330 printhead produces high-density prints even at high speeds, consistently delivering outstanding results.



Practical speed: **17.0m²/h**

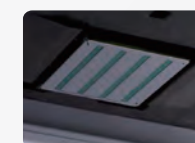


Easy for Everyone

Intuitive Product Design

Single Printhead

The single printhead system reduces cleaning and adjustment time. Its straightforward design lets you work more quickly and efficiently.



Wide-Opening Cover

Upward-Facing Control Panel



Ink Saving Function

Save on ink consumption in just two clicks with user-friendly software.

Anyone can easily reduce ink consumption without technical expertise. The function is available for any substrate or profile.



Dot Adjustment System (DAS)

An automatic feature for easy and precise media changes.

DAS automatically performs bi-directional print and media feed adjustments, ensuring easy media changes without human error.



Simple Design Software

Simple Create

Simple Create is the original software for designing labels, stickers, and wobblers without the need for DTP (Design to Print) software. Combined with RasterLink7, it enables direct output of design data to the printer.

Note: RasterLink7 must be installed on the same computer.

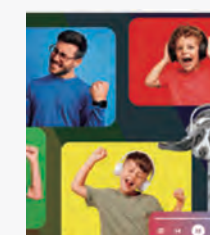


Reliable Productivity Even During Peak Season

	4 Colour	8 Colour
High Quality 1200x1200 6 pass 12 pass	10.1m ² /h	5.0m ² /h
Quality 900x1200 6 pass 12 pass	12.5m ² /h	6.0m ² /h
Standard 600x1200 6 pass 12 pass	17.0m ² /h	8.5m ² /h
High Speed 600x1200 4 pass 8 pass	22.0m ² /h	11.0m ² /h

*Print Speeds of 200 Series

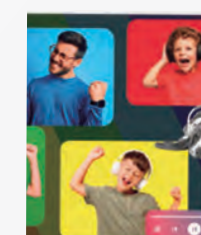
Adjustable in 5 steps from level-1 to level-5



Ink Saving OFF
(Default)



Ink Saving Level 3
(Approx. 30% reduction)



Ink Saving Level 5
(Approx. 30% reduction)

